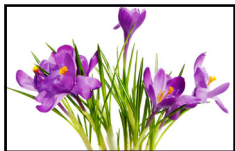


# DEPARTMENT 9 ~ HORTICULTURE



**ENTRY DEADLINE:** Saturday, July 13, 2024  
**ENTRY FEES:** .50¢ per entry  
 Junior Divisions - NO ENTRY FEE  
**ENTRY DAYS:** Sun. July 28, 10:00 AM - 5:00 pm  
 Mon. July 29, 8:00 am - 11:00am

**Directors - in - Charge**  
**Sharen Cope, Chair**  
 330-247-8557  
 and  
**Chelsea Lease, Asst.**  
 330-843-3299

**THE ARTS & CRAFTS BUILDING WILL BE CLOSED UNTIL 9:00 A.M. TUESDAY FOR JUDGING**

**ENTRY TAGS MAY BE PICKED UP IN THE ARTS & CRAFTS BUILDING ON SATURDAY, JULY 20 OR SUNDAY, JULY 21 FROM 10 AM TO 5 PM**

- No changes can be made in any class after filing or from those stated below.
- All entries in this department must be received by 11:00am Mon July 29 , and remain there through the last night of the fair.
- Entries may be removed Monday, Aug 5, between 10:00 am and 5:00 pm. Administration will not be responsible for items remaining after that time. **YOU MUST** have claim tags to remove entries.
- No awards will be made on any entry showing insect/disease /injury.
- Single entry in any class does not automatically place entry in 1st place.
- Entry must be worthy of blue ribbon award.

## LOT 1 - HERBS

**Premiums: 1st - \$4.00 2nd \$3.00 3rd \$2.00**

- All herbs **MUST BE FRESH**. Herbs should be cut in the early morning or late evening and seasoned in cool water in a cool place.
- No herbs are to exceed 14 inches in height.
- All entries must have at least 2 leaves except Gladiolas.
- Herbs that can be sub-grouped, such as mint, oregano, thyme, basil, etc. MUST be labeled on the exhibitor's tag as to the specific type. This allows the judge to know the type of herb being displayed and that the exhibitor knows what he/she is growing.
- One of the criteria that the judge will use in judging the herbs is by noting the quality of the leaves or petals. Picking off damaged leaves or petals improves the quality of the specimens.
- Herb Wreath - with exception of the base, the entire wreath or swag should consist of fresh or dried herbs. The wreath or swag. MUST be equipped to hang.
- Herb Vinegar is to be displayed in a CLEAR glass bottle, not less than 12 oz. Exhibitor's tag and any decorative tag must have the kind of vinegar listed on it. Bring a small sample in small glass jar for judge to taste.
- All Herbs must be labeled to identify the specific type in order to be JUDGED.
- Garlic bulb to be shown on a paper plate, to be cleaned, trim top and roots to one inch.
- ALL ENTRIES ARE TO BE SHOWN IN CONTAINERS PROVIDED BY THE FAIR, EXCEPT VINEGAR.
- Herbs, with the exception of Lavender, Garlic Cloves, Chives, Tansy and Monarda are not grown for their flowers. All other herbs should be one stem without flowers present.
- **No leaf shine or oil permitted.** The purpose of a flower show is to educate the public. Name & variety further this purpose.

### Class No: Description

1. Sweet Basil
2. Purple Basil
3. Lemon Basil
4. Any other Basil not listed
5. Sage
6. Lavender
7. Mint, specify type
8. Rosemary
9. Tansy
10. Yarrow

### Class No: Description

11. Thyme, specify type
12. Lemon Balm
13. Parsley, Italian Flat Leaf
14. Parsley, Curled Leaf
15. Cilantro
16. Catnip
17. Dill Head
18. Dill Weed
19. Chives, 4 stems, 1 of which is flowering
20. Garlic Chives, 4 stems, 1 of which is flowering

### Class No: Description

21. Garlic Bulb
22. Oregano
23. Monarda (beebalm)
24. Pennyroyal
25. Any other herb not listed
26. Herb Vinegar
27. Herbal Oils, specify type
28. Herb Arrangement, all Herbs
29. Herb Potpourri - judged on appearance and fragrance
30. All Herb Wreath or Swag



**\*BEST OF SHOW.....Rosette & Award**

# DEPARTMENT 9 ~ HORTICULTURE



**ENTRY DEADLINE:** Saturday, July 13, 2024  
**ENTRY FEES:** .50¢ per entry  
 Junior Divisions - NO ENTRY FEE  
**ENTRY DAYS:** Sun. July 28, 10:00 AM - 5:00 pm  
 Mon. July 29, 8:00 am - 11:00am  
**JUDGING:** Monday, July 29, 3:00 pm

**THE ARTS & CRAFTS BUILDING WILL BE CLOSED UNTIL 9:00 A.M. TUESDAY FOR JUDGING**

**ENTRY TAGS MAY BE PICKED UP IN THE ARTS & CRAFTS BUILDING ON SATURDAY, JULY 20 OR SUNDAY, JULY 21 FROM 10 AM TO 5 PM**

- No changes can be made in any class after filing or from those stated below.
- All entries in this department must be received by 11:00 Mon July 29 , and remain there through the last night of the fair.
- Entries may be removed Monday, Aug 5, between 10:00 am and 5:00 pm. Administration will not be responsible for items remaining after that time. **YOU MUST** have claim tags to remove entries.

### Rules

- This division is open to all amateur gardeners, including Garden Club Members except where noted “Professional”
- Exhibitor may make more than one entry in each class, with a limit of 3.
- Variety and color of each entry must be different.
- Exhibitors may replace blooms that have wilted, Thursday 6-9 pm and on Friday 9 am - 12 pm. These blooms will not be judged.
- **ALL ENTRIES ARE TO BE SHOWN IN CONTAINERS PROVIDED BY THE FAIR.**

### SUGGESTED ADVICE FOR EXHIBITORS

- All blooms should be cut after sundown before exhibition day and seasoned in cool water in a cool place with no drafts.
- All blooms should be cut with stems long enough to put the bloom from 2 - 6 inches above the container according to size of bloom. A little foliage showing often enhances the exhibit.
- BE SURE TO KEEP FOLIAGE OUT OF THE WATER.
- FLOWER FOOD ADDED TO THE WATER WILL PROLONG FRESHNESS OF CUT FLOWERS.
- DON'T CROWD THE BLOOM, BETTER TO USE A LARGER CONTAINER.
- Matched bloom in size and color always counts, except in arrangements.
- **When schedule calls for a certain number of bloom, be sure you use that EXACT NUMBER!**
- Remove all pollen on leaves.
- Wedging is encouraged.

## FLOWERS

### LOT 2 - JUNIOR DIVISION – (age 8 & under)

#### LOT 3 - JUNIOR DIVISION – ages 9-13)

#### LOT 4 - JUNIOR DIVISION – (ages 14-17)

#### LOT 5 - SENIOR DIVISION – (18 & over)

Premiums: 1st - \$4.00 2nd \$3.00 3rd \$2.00

### **DAISIES**

#### **Class No. Description**

1. Shasta - 3 bloom, same color
2. Gloriosa - 3 bloom, same color
3. Any other Daisy - 3 bloom, same color



### **DAHLIA (to be shown with a set of leaves)**

#### **Class No. Description**

4. Ball form, 3 bloom, same color
5. One bloom over 10 inches
6. One bloom 8 to 10 inches
7. One bloom 6 to 8 inches
8. One bloom 4 to 6 inches
9. Dahlia 2 to 4 inches, 3 bloom, same color
10. Pom Pom - 3 bloom, same color
11. Single - 3 bloom, same color
12. Cactus type 6 to 8 inches, one bloom
13. Cactus type 4 to 6 inches, one bloom
14. Cactus type 2 to 4 inches, 3 bloom, same color

# DEPARTMENT 9 ~ HORTICULTURE

**ENTRY DEADLINE:** Saturday, July 13, 2024

**ENTRY FEES:** .50¢ per entry

**ENTRY DAYS:** Sun. July 28, 10:00 AM - 5:00 pm  
Mon. July 29, 8:00 am - 11:00am

**JUDGING:** Monday, July 29, 3:00 pm

**THE ARTS & CRAFTS BUILDING WILL BE CLOSED UNTIL 9:00 A.M. TUESDAY FOR JUDGING**

**ENTRY TAGS MAY BE PICKED UP IN THE ARTS & CRAFTS BUILDING  
ON SATURDAY, JULY 20 OR SUNDAY, JULY 21 FROM 10:00 AM TO 5:00 PM**

## MARIGOLDS

### Class No. Description

19. Orange over 2 1/2 inches, one bloom
20. Gold over 2 1/2 inches, one bloom
21. Yellow over 2 1/2 inches, one bloom
22. White over 2 1/2 inches, one bloom
23. Any color not listed over 2 1/2 inches, 1 bloom
24. French Dwarf, double flowered, 1 spray
25. French Single, Flowered broad petal, 1 spray



## PETUNIAS

### Class No. Description

26. Single bloom, 1 spray, same color
27. Double bloom, 1 spray, same color

## ROSES

### Class No. Description

28. Hybrid Tea, Red, one bloom
29. Hybrid Tea, Red Blend, one bloom
30. Hybrid Tea, Yellow, one bloom
31. Hybrid Tea, Yellow Blend, one bloom
32. Hybrid Tea, White, one bloom
33. Hybrid Tea, Pink, one bloom
34. Hybrid Tea, any color, one bloom
35. Floribunda, 1 spray
36. Polyantha, 1 spray
37. Grandiflora, 1 spray
38. Miniature, 1 spray
39. Miniature, 1 bloom



## SNAPDRAGONS

### Class No: Description

40. Common Garden variety, 3 spikes, same color

## ZINNIAS

### Class No: Description

41. One Cactus, Flowered 3 to 4 1/2 inches
42. One Dahlia, Flowered 3 to 4 1/2 inches
43. Dwarf, Flowered 2 to 3 inches, 3 bloom, same color
44. Dwarf, Flowered 1 to 2 inches, 3 bloom, same color
45. Button, Flowered 1 inch & under, 3 bloom, same color
46. Multi-colored bloom, 1 bloom, any size, 2 or more colors

## COCKS COMB (remove secondary plumes & feathers)

### Class No: Description

47. Plume, one stem
48. Crested, one bloom showing 2 or more colors



## SUNFLOWERS

### Class No: Description

49. One bloom, solid color, under 4 inches
50. One bloom, multi color, under 4 inches
51. One bloom, solid color, 4 to 6 inches
52. One bloom, multi, colored 4 to 6 inches
53. One bloom, solid color over 6 inches
54. One bloom, multi colored over 6 inches



## EVERLASTING

### Class No: Description

55. Straw Flowers, 5 stems, mixed color
56. Straw Flowers, 5 stems, same color
57. Statice, 5 stems, mixed color
58. Statice, 5 stems, same color
59. Globe Amaranth, 5 stems (clover flowers) mixed color
60. Globe Amaranth, 5 stems (clover flowers) same color

## HOSTAS

### Class No: Description

61. Small - 1 leaf up to 3" across
62. Medium - 1 leaf, 3-6" across
63. Large - 1 leaf, 8" and up

## CANNA

### Class No: Description

64. Include flower, one stalk, limit 16"

## COSMOS

### Class No: Description

65. (Single flower) - 3 stems
66. Double flower) - 3 stems



## COLEUS

### Class No: Description

67. (No flowers) - 1 stem

## HOUSE PLANTS

### Class No: Description

68. Plant exhibited for foliage
69. Plant exhibited for flowers
70. Any other flower not listed in classes 1 to 69
71. Wreath or Swag, home grown materials, no tinting or dyeing

## BASKETS & GARDENS

### Class No: Description

72. Flowered Hanging Basket
73. Foliage Hanging Basket
74. Flowering Butterfly Garden
75. Greenery Butterfly Garden
76. Any Other Butterfly Garden



**\* BEST OF SHOW (Classes 1 to 76).....Plaque**

# DEPARTMENT 9 ~ HORTICULTURE

**ENTRY DEADLINE:** Saturday, July 13, 2024  
**ENTRY FEES:** .50¢ per entry  
**ENTRY DAYS:** Sun. July 28, 10:00 AM - 5:00 pm  
Mon. July 29, 8:00 am - 11:00am  
**JUDGING:** Monday, July 29, 3:00 pm

**THE ARTS & CRAFTS BUILDING WILL BE CLOSED UNTIL 9:00 A.M. TUESDAY FOR JUDGING**

**ENTRY TAGS MAY BE PICKED UP IN THE ARTS & CRAFTS BUILDING  
ON SATURDAY, JULY 20 OR SUNDAY, JULY 21 FROM 10:00 AM TO 5:00 PM**

## **LOT 6 - ARTISTIC DESIGNS**

**(Amateurs - No Professionals)**

**Premiums: 1st \$10.00 2nd - \$7.00 3rd - \$5.00**

- All entries in this lot must be checked in between 2:00 - 6:00 pm, Thursday, August 1, and remain there until 8:00 pm, the last night of the fair, unless prior arrangements are made with the director.
- This class is open to all amateur gardeners, including Garden Club Members.
- Exhibitor may make more than one entry in each class.
- All designs must be made by the exhibitor.
- No ARTIFICIAL flowers or foliage will be allowed.
- NO tinting of flowers or foliage will be allowed.
- Use of accessories will be noted under class.

### **THEMES**

#### **Class No.**

1. The Ocean – Water Showing
2. Green Grasslands – All green, including container
3. Stately Forests – Using wood in the design
4. Scenic Roads & Views – All roadside plant material
5. Friends & Family - Using an animal figure in the design
6. Home & Family - Swag Wreath—Must have a hanger

**\* BEST OF SHOW.....Rosette & Award**



## **LOT 7 - FLOWER BOXES**

**ENTRY FEE: None**

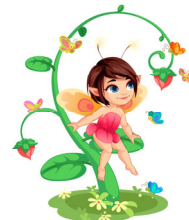
**Premiums: 1st - \$4.00 2nd - \$3.00 3rd - \$2.00**

- All classes MUST have live plants or flowers-
- Nothing artificial permitted

#### **Class No. Description**

1. Decorated window box – not to exceed 16”
2. Patio Pot or Container – not to exceed 12”
3. Strawberry Pot with live plants – not to exceed 12”

**\*BEST OF SHOW.....Rosette & Award**



## **LOT 8 - FAIRY GARDEN**

**Premiums: 1st- 4-00 2nd - \$3.00 3rd - \$2.00**

- Container not to exceed 18 inches.
- Must have 3 or more plants.
- Must list plant material on a card to be placed with exhibit.
- Figurines are permitted maximum size of 18”.

#### **Class No. Description**

1. Fairy Garden

**\*BEST OF SHOW.....Rosette & Award**

## **LOT 9 - SPECIAL CATEGORY FOR PROFESSIONALS**

**ENTRY FEE: None**

**No Placings - No Premiums Paid**

- Exhibitor must have or operate a business in the tri-county area.
- Small sign for advertising may be included.
- Arrangements will be voted on by staff members.

#### **Class No. Description**

1. Wheel On Down

**\*Best of Show.....Rosette & Award**